

YPÄJÄ 2024

MARATHON INFO

CAICH2*-P1

(03.08.2024)

Course Designer – Kristaps Caune (LAT)





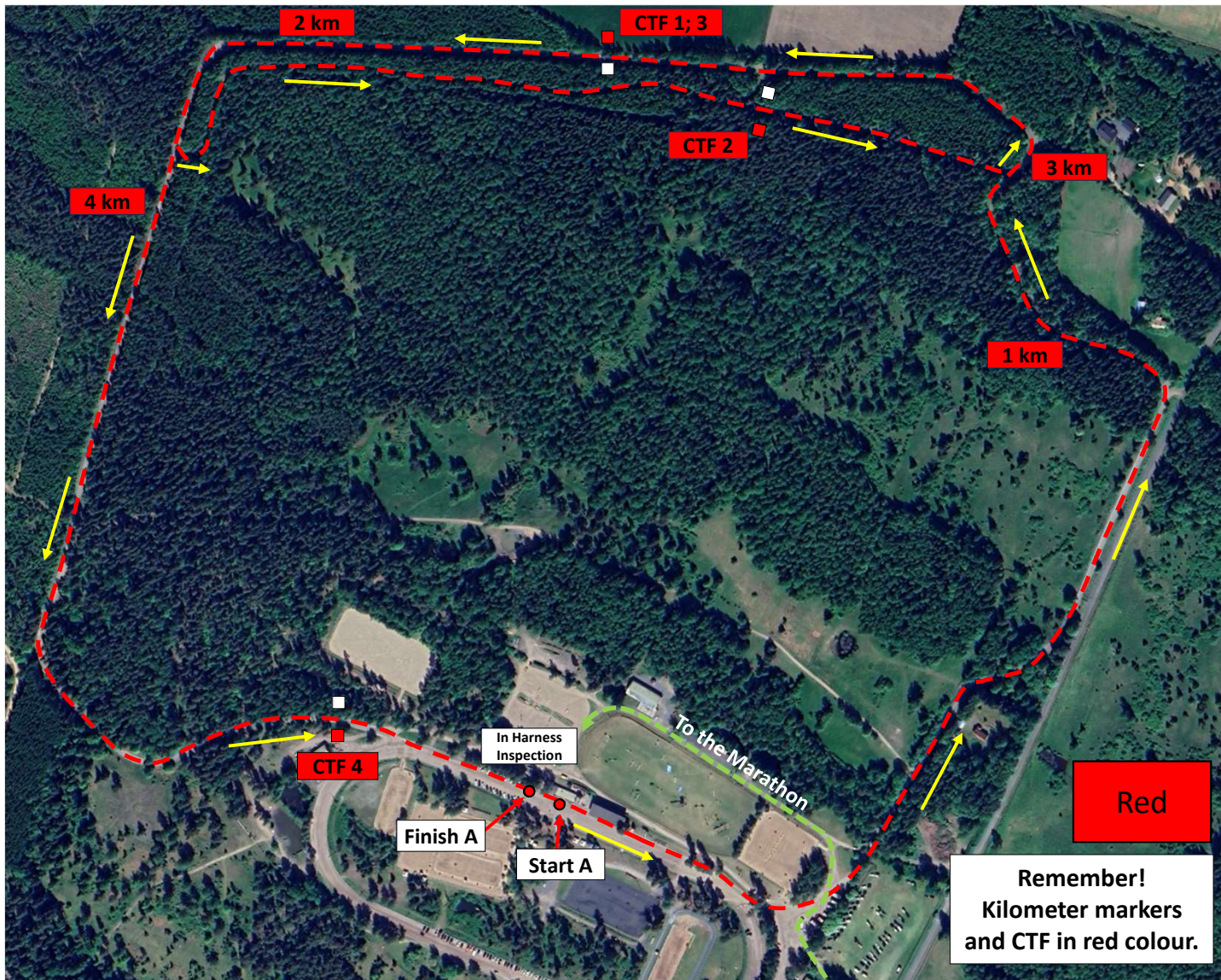
YPÄJÄ 2024

Marathon Section Times

CAICh2*-P1
(03.08.2024)

Ponies

Section	Distance	Speed	Minimum Time	Time Allowed	Maximum Time	Compulsory Turning Flags
In Harness Inspection						
Section A	4955 m	12 km/h	22 min 47 sec	24 min 47 sec	29 min 44 sec	1 - 4
Neutral Zone	3 min					
Rest	10 min					
Warm Up Obstacle	max. 2 min					
Section B O1; O2; O4; O5; O7	4700 m	13 km/h	18 min 42 sec	21 min 42 sec	43 min 24 sec	1 - 9
Cool Down In Harness Examination	Track		10 min		15 min	



YPÄJÄ 2024

CAICh2*-P1

Section A

4955 m

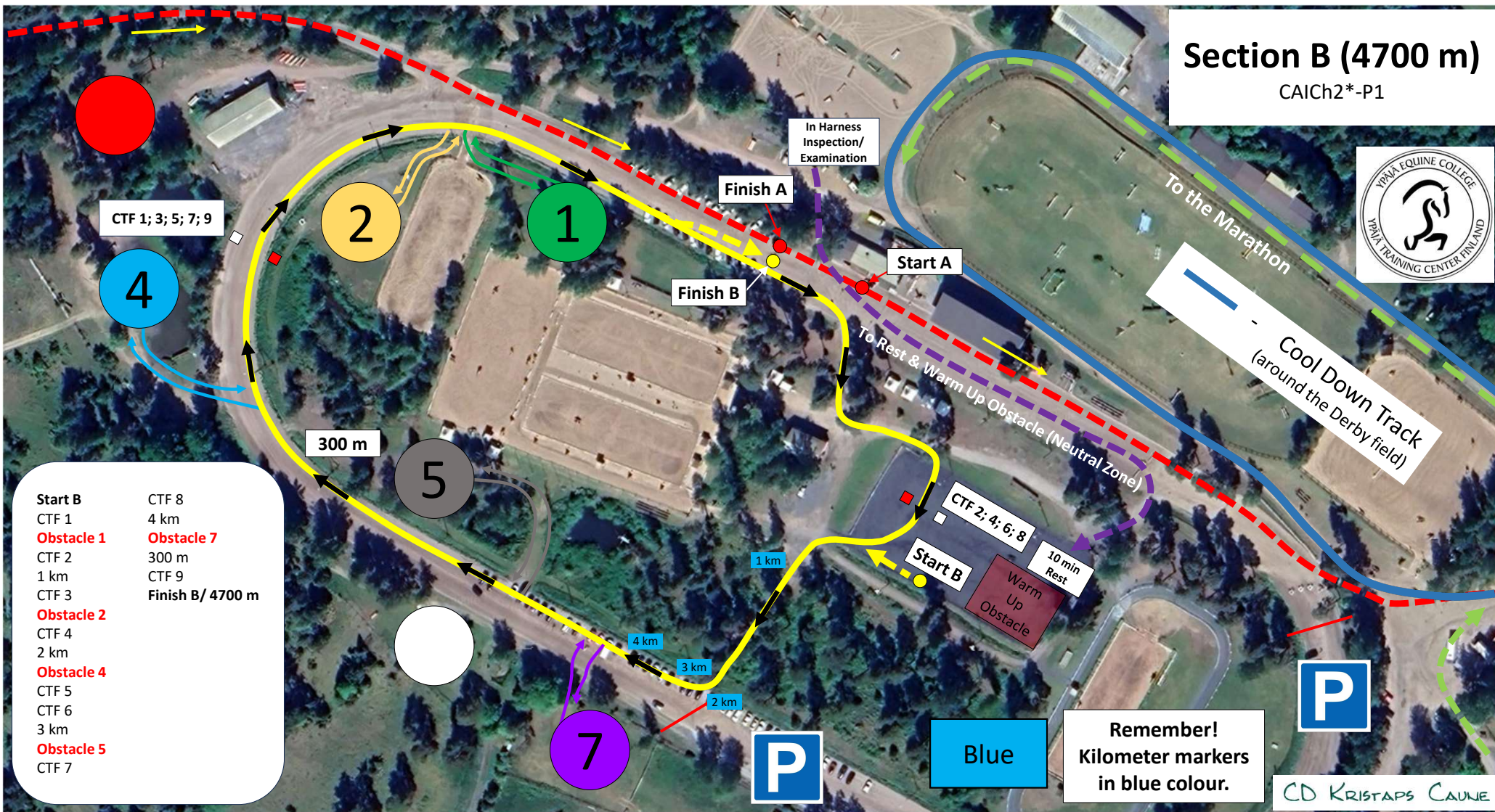
Start A	3 km
1 km	CTF 3
CTF 1	4 km
2 km	CTF 4
CTF 2	Finish A
	4955 m

Remember!
Kilometer markers
and CTF in red colour.

CD KRISTAPS CAUNE

Section B (4700 m)

CAICh2*-P1



- | | |
|-------------------|-------------------|
| Start B | CTF 8 |
| CTF 1 | 4 km |
| Obstacle 1 | Obstacle 7 |
| CTF 2 | 300 m |
| 1 km | CTF 9 |
| CTF 3 | Finish B/ 4700 m |
| Obstacle 2 | |
| CTF 4 | 2 km |
| Obstacle 4 | |
| CTF 5 | |
| CTF 6 | 3 km |
| Obstacle 5 | |
| CTF 7 | |

Remember!
Kilometer markers
in blue colour.

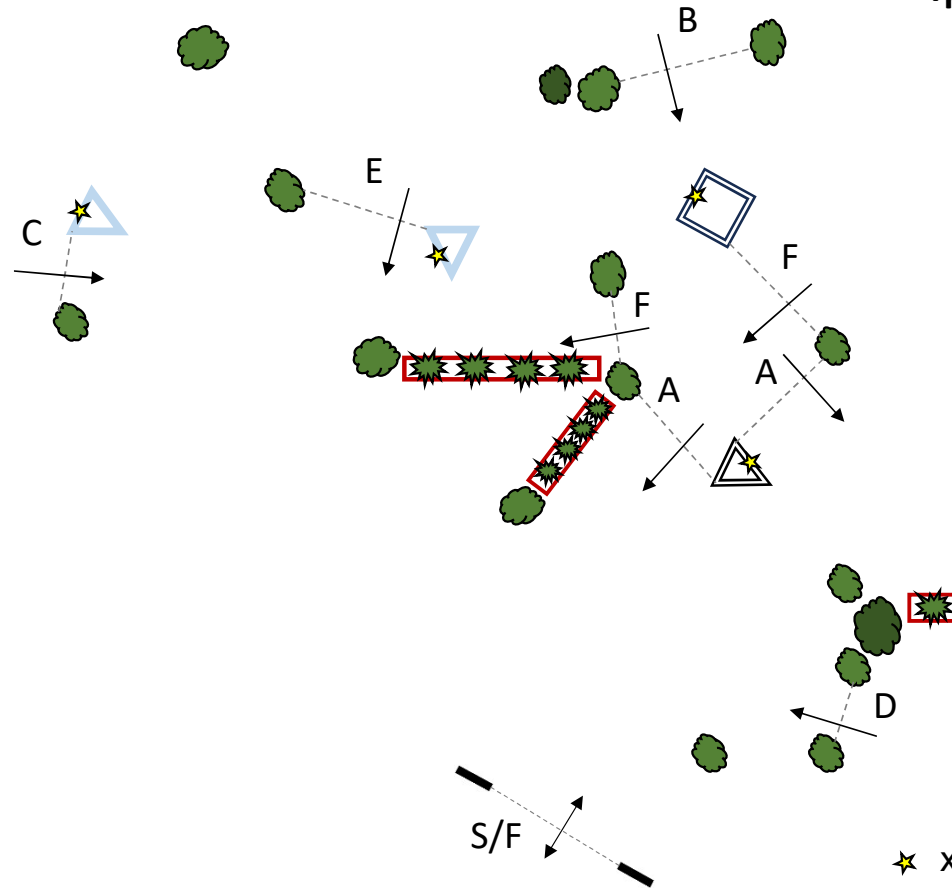
CD KRISTAPS CAUNE

CAICH2*-P1 Gates – A-D

Ypäjän Osuuspankki



1



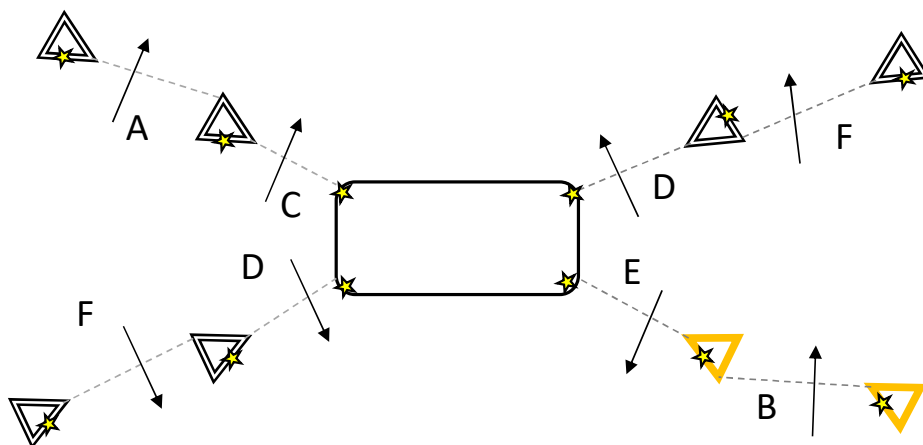
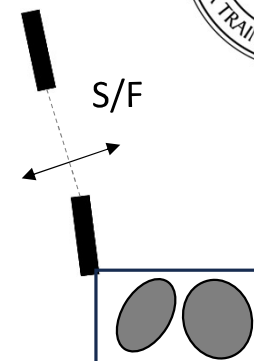
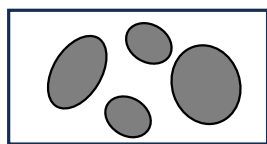
★ x 4 - dislodgeable elements

CD KRISTAPS CAUNE

CAICh2*-P1 Gates – A-D

Equine College

2



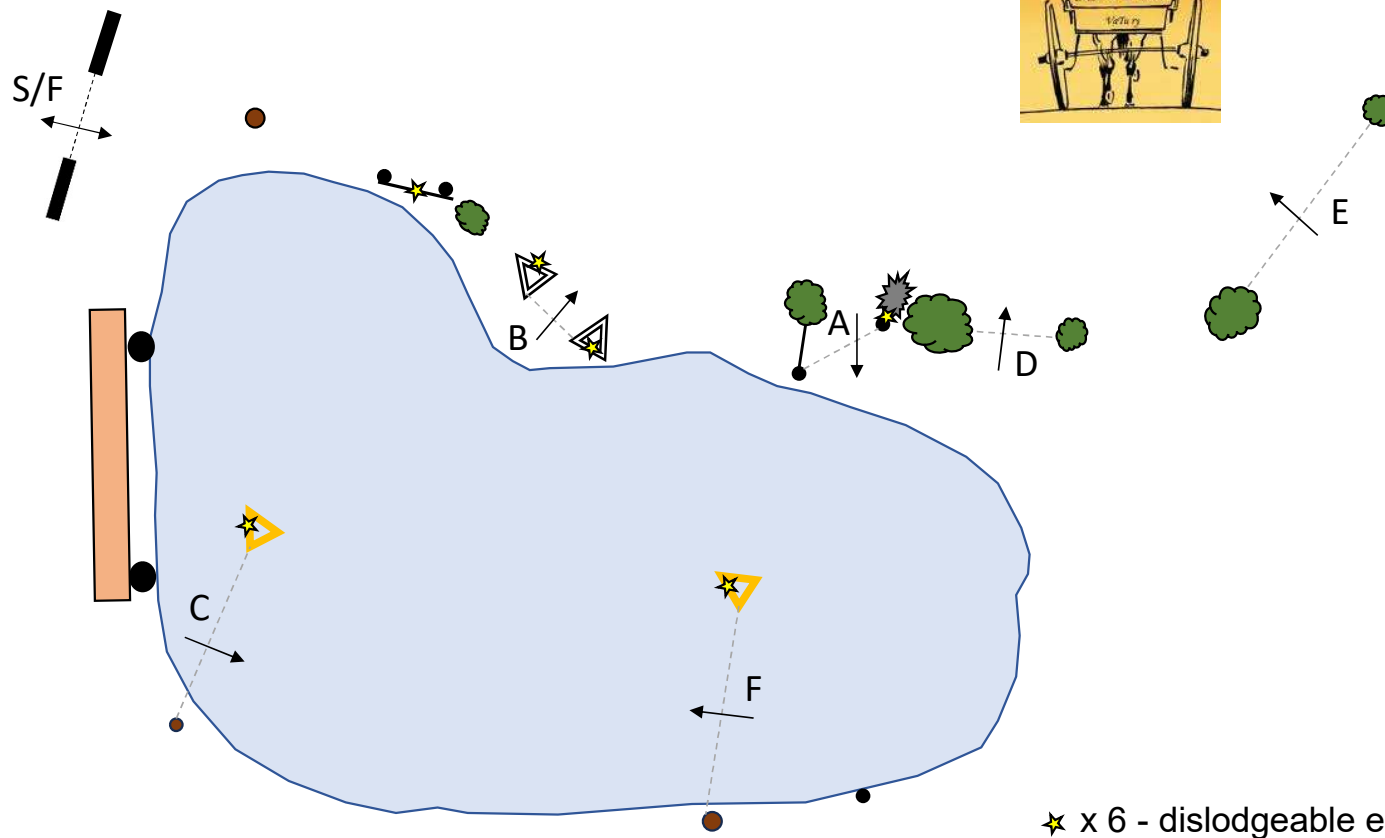
★ x 12 - dislodgeable elements

CD KRISTAPS CAUNE

CAICh2*-P1 Gates – A-D



VaTu ry **4**

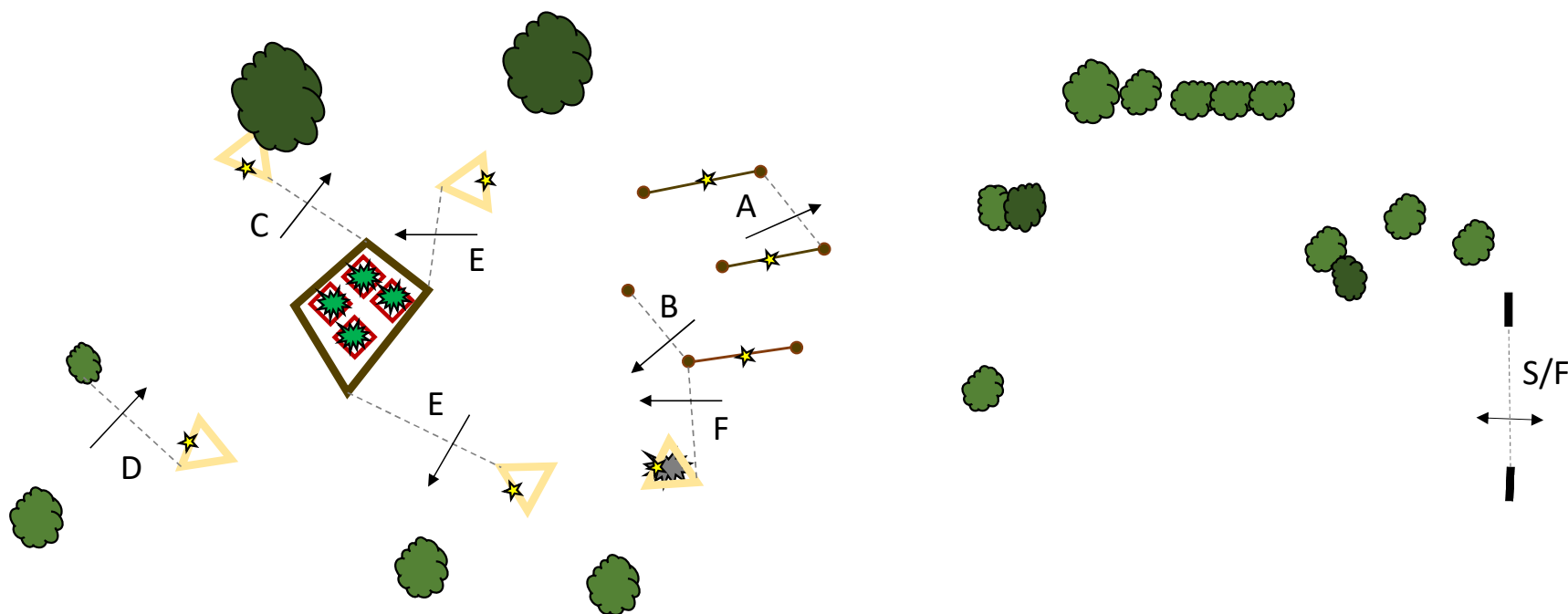


★ x 6 - dislodgable elements

CD KRISTAPS CAUNE

CAICh2*-P1 Gates – A-D

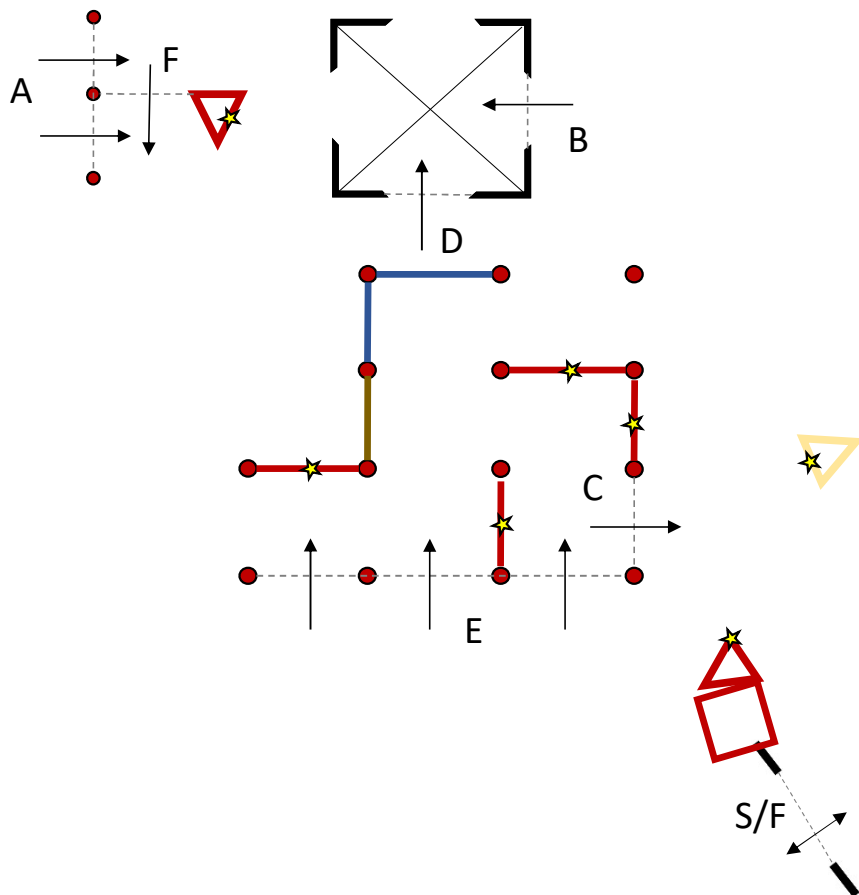
Equestrian Sport Museum



★ x 8 - dislodgeable elements

CD KRISTAPS CAUNE

CAICH2*-P1 Gates – A-D



★ x 7 - dislodgable elements

CD KRISTAPS CAUNE